

AB Stockholmshem

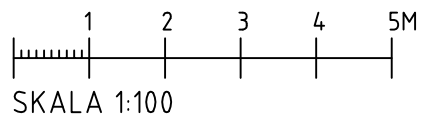
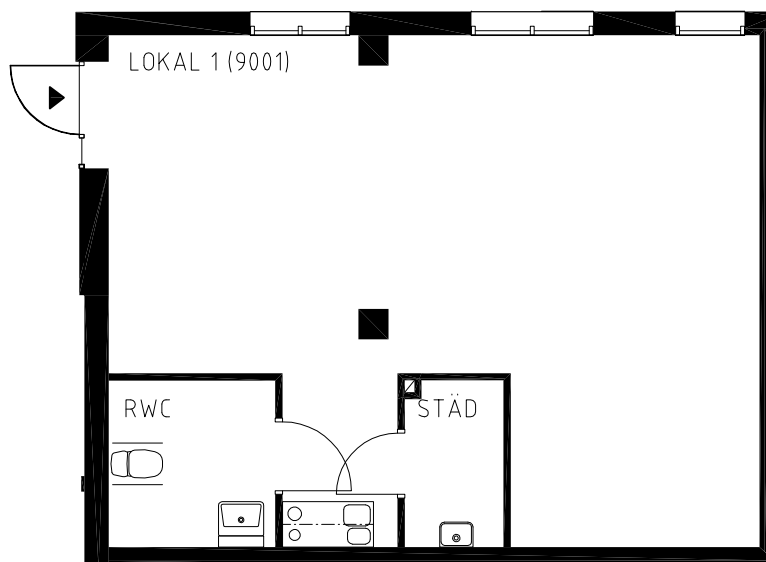
Lokal 9001

Yta 58 m<sup>2</sup>

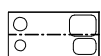
Datum  
2011-12-05

Kv.Skalman  
Annedal Omr.235

Senast reviderad



FÖRKLARINGAR



PENTRY



SCHAKT



SÄNKT TAK/HYLLA



LÄGE I BYGGNADEN

